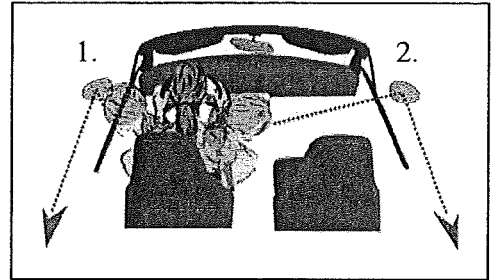


## AAA Safe Driving for Mature Operators™ Enhanced Mirror Setting

There is a simple yet powerful technique to reduce the size of your vehicles blind spots. It involves only a couple of adjustments to your vehicle's side mirrors. From a parked position, follow these steps:

1. To adjust the left side mirror, rest your head against the closed window and set the mirror to barely show the edge of your vehicle.
2. To set the right mirror, lean to the right so that your head is directly below the rearview mirror or above the center console. Adjust this mirror the same way, so you can just barely see the edge of the right side of your vehicle.

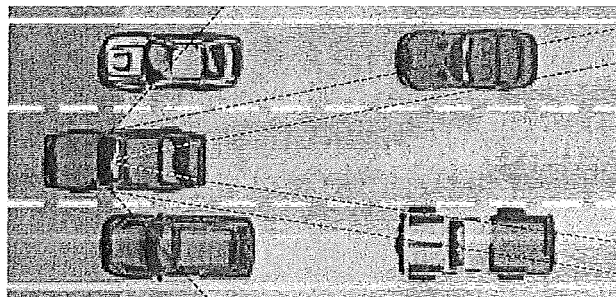


With the side mirrors now angled outward slightly more, you'll gain increased visual coverage of your blind spots. You should still perform a quick head check before changing lanes, but you'll now have almost seamless visual contact with all areas behind your vehicle.



Another way to enhance your vision to the rear is to install special mirrors to reduce your blind areas.

- Consider replacing your regular mirrors with larger ones.
- Use a panoramic (curved) rearview mirror inside.
- Consider installing larger side mirrors-right and left.
- You may also want to attach a small convex (curved) mirror on a side view mirror. Although a convex mirror makes objects seem farther away, they can help you detect movement more easily. However, don't depend solely on a convex side mirror, which might make you think you have more room than you really do.



*Knowing how and when to use mirrors to check traffic conditions makes you a safer driver.*