



# University of Michigan

Pre-Departure Orientation

June 10, 2025





**Welcome to  
Michigan!**

# Meet the International Center Team



**Samantha Antoine**  
**Program Manager,**  
**GEEA**



**Laure Bordas-Isner**  
**International Student**  
**& Scholar Advisor**



**Shih-Ya Chang**  
**International Student**  
**Advocate**

# Meet the International Center Team



**Jake Koelzer**  
**Program Manager &**  
**Advisor, GEEA**



**Boonsiree Nuveman**  
**International Student &**  
**Scholar Advisor**



**Kelly Wagner**  
**Senior Program**  
**Manager, GEEA**





# Agenda

**5 To-Dos  
before  
Departure**

**5 To-Dos  
after  
Arrival**

**Q & A**



# **Top 5: Things To Do Before Leaving**

# 1. Register and Prepare For Classes



## U.S. Academic Expectations:

- Active Learning (discussion/debate, sharing ideas, team-work)
- Assignments (presentations, papers, case studies)
- Critical Thinking
- Relaxed Atmosphere
- Student-Centered & Students Freely Express Opinions

## Check in with Your Academic/Program Advisor:

- Undergraduate Students: You should be led through the registration process through the Office of New Student Programs (ONSP). Please read their communications.
- Graduate Students: Your program should reach out to you directly regarding class registration.

## Preparing Your Course Schedule:

- [Backpack Feature](#)
- [Atlas Schedule Builder](#)

## 2. Secure Housing

### Undergraduate Students

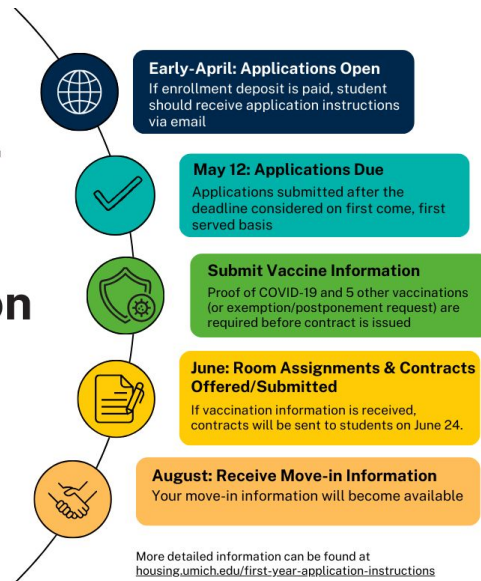


## First-year Undergraduate Students

[Michigan Housing](#) serves as a home on campus for nearly 11,000 students in a typical year.

Residence halls function as small, accessible communities, helping new students transition from high school to college.

### First-Year Campus Housing Application Process



## Returning and Transfer Undergraduate Students

Housing for returning and transfer students **is limited**.

They are assigned on a first-come, first-served basis if spots remain vacant after first-year students are accommodated.



## 2. Secure Housing

*Graduate Students*



### On-Campus Housing Options for Graduate Students:

- Munger Graduate Residences (Suites)
- Northwood I, II, IV & V: Graduate and Family Apartments/Townhomes
- Lawyer's Club (Only students enrolled in Law School)
- Martha Cook Residence Hall (Women Only)
- Henderson House (Women Only)

### **Applications Timeline:**

- **Mid-April:** Housing information emailed to students who have paid their deposit
- **Early-May:** Assignments made on a rolling basis
- **Note:** Applicants must have all materials/vaccine information submitted to get their contract.
- **Contact:** [graduatehousing@umich.edu](mailto:graduatehousing@umich.edu) (use U-M email account and include your UMID in the email)

# 2. Secure Housing

*All Students*



## Off-Campus Housing

- Most students at U-M live in off-campus housing
- [Beyond the Diag](#) Office
  - [Off-Campus Living Guide](#)
- Event Recording & Slides Available: [Off-Campus Housing Q&A](#)

## Meal Plans

- Managed by [MIDining](#). Available for off-campus housing too!

## Lease Review: Student Legal Services

- Student Legal Services (SLS) can review your leases and help you look out for problems before you sign!
- Visit <https://studentlegalservices.umich.edu/> and click “Housing” to set up an appointment with an attorney for advice before you sign or [send a security deposit](#).

## 2. Secure Housing



### Avoiding Scams

Every year, students get scammed by **replying to fake apartment advertisements**. If a listing seems too good to be true - it probably is!

#### Common **Red Flags**:

- Rent offered at rate well below market value.
- Can't or won't meet in-person or show you the unit over video call.
- Request to wire money to an account not located in the USA. Or, lists unit on legitimate site (Zillow, Apartments.com, AirBnB, etc.) but won't go through those websites' payment systems.
- Request for a deposit in bitcoin, money wire (Western Union), or other service that isn't traceable to a person.
- Dramatic story trying to pressure you to say yes quickly or give money before you've signed a contract. Landlords may charge small application fee (\$25-\$100) to run background check, but never send security deposit before you have signed a lease.

### 3. Prepare for Your Visa Interview and Immigration Procedures



#### Applying for Your U.S. Visa:

- Pay the [I-901 SEVIS fee](#)
- Complete the [DS-160 form](#) online (submit at least 48 hours before your appointment)
- Pay the visa application fee
- Make an appointment with the nearest [Consulate](#)
- [U.S. Visa Application Website](#)

# 3. Prepare for Your Visa Interview and Immigration Procedures



## Documents To Bring to Interview:

- Passport valid for 6 months beyond your period of stay in the United States (unless exempt by [country-specific agreements](#))
- [Form DS-160](#) confirmation page (**submit at least 48 hours before your appointment**)
- Application fee payment receipt, if you are required to pay before your interview
- Photo - If the [photo upload fails](#) on the DS-160, you must bring one printed photo in the format explained in the [Photograph Requirements](#).
- Form I-20 (F-1 students) or DS-2019 (J-1 students)
- Proof of funding for all educational and living expenses

## Consular Officer May Request Additional Documents:

Evidence of your academic preparation, such as:

- Transcripts, diplomas, degrees, or certificates from schools you attended
- Standardized test scores required by U-M
- Evidence of intent to depart the United States upon completion of the course of study

*\*Documentation requirements vary by location, so be sure to check the specific website/guidance of your consulate/embassy.*



# 3. Prepare for Your Visa Interview and Immigration Procedures



## Quick Tips/Advice:

- Apply for your visa as soon as possible after receiving your Form I-20/DS-2019 and follow expedited appointment procedure if needed
- The following links contain more detailed information regarding the required documentation for your visa application:
  - [U.S. Department of State F-1 visa application information](#)
  - [U.S. Department of State J-1 visa application information](#)
- Be prepared to demonstrate your intent to return home after you complete your academic program
- Visit our website for [additional tips on the visa appointment](#), our [U.S. Immigration and Visas](#) page, and [page for new students](#).
- Submit the “Report Visa Problem” form under the Requests section of [M-Passport](#) to report your visa issue

# 3. Prepare for Your Visa Interview and Immigration Procedures



## Preparing for Your Arrival:

- Make arrangements to transfer money to the U.S. after you arrive and open a bank account.
- Any amount/combination of money (cash, money order, travelers' checks) over \$10,000 must be declared in advance on a U.S. Customs and Border Protection Declaration Form 6059B and FinCEN 105 when you arrive in the US.
- Please notify your U-M admissions unit if you are unable to arrive by the start of the term.
- **Undergraduates:** [OUA.intlassist@umich.edu](mailto:OUA.intlassist@umich.edu)
- **Graduates:** contact your admitting unit

# 4. What to Pack and Booking Your Flight



## Nearest International Airport:

Detroit Metropolitan Airport ([DTW](#))

- Approximately 25 miles (40km) from campus
- Delta Hub = many direct international flights

## Transportation Options from DTW to Ann Arbor:

- [Michigan Flyer](#) (\$15) \*reservation required
- [Lyft](#) & [Uber](#) (around \$50+ to Central Campus)
- Taxi (stations at airport)
- Your own networks!
  - For example: international student-focused student organizations

# 4. What to Pack and Booking Your Flight



## What to Pack:

- Passport, Visa, I-20, and other immigration documents
  - Copies of each!
- Clothing you can layer for varying temperatures
- School supplies (computer, calculator)
  - Can also be purchased through [U-M Tech Shop](#)
- Packaged snacks (in case of flight delays/late arrival)
- Extra clothing (carry-on) in case of lost luggage
- Personal supplies: glasses, contact lenses, medications
  - UHS: [Prescription medication guidelines and recommendations](#)

## What NOT to Pack:

- Bulky winter clothing (can buy in U.S.)
- Spices, cooking utensils, dishes
- Electronics not compatible with U.S. outlets (120v)
- [“Don’t Pack a Pest”](#)
- [U.S. DHS Prohibited & Restricted Items](#)

# 5. Prepare for Culture Shock!





# 5. Prepare for Culture Shock!



## Weather in Ann Arbor

### Average High Temperatures:

- Summer: 26-28°C / 80-83°F
- Fall: 9-23°C / 48-70°F
- Winter: -1-1.6°C / 30-35°F
- Spring: 7-22°C / 45-70°F

### Average Snowfall (Dec-Feb):

- 33-40.6 cm per month
- 13-16 inches per month



# Q&A

- 01** Register & Prepare for Classes
- 02** Secure Housing
- 03** Prepare for Your Visa Interview
- 04** What to Pack & Booking Your Flight
- 05** Prepare for Culture Shock





# Top 5: Things To Do After Arrival

# 1. Immigration Check-In and Maintaining Status



## Immigration Check-In Process:

- Check your [Most Recent I-94](#) online **after** you have arrived in the U.S. to be sure you were admitted in the correct immigration status



### Most Recent I-94

Admission (I-94) Record Number : 51415565885

Most Recent Date of Entry: 2017 July 25

Class of Admission (F1)

Admit Until Date D/S

Details provided on the I-94 Information form:

Last/Surname :

First (Given) Name :

Birth Date :

Passport Number :



- Enroll in and complete our mandatory **online** immigration check-in course **as soon as possible upon arrival in the U.S.**
  - Instructions will be sent via email closer to the start of the term
  - Both online check-in course completion, and a separate M-Passport check-in documents submission, are required. Also, [address/phone](#) reporting.

# 1. Immigration Check-In and Maintaining Status



## Maintaining Status While in the United States:

- Maintain **good academic standing** and make progress towards degree program requirements
- Enroll full-time during academic year (Fall & Winter terms):
  - Undergraduate = 12+ credits per term
  - Graduate = 8+ credits per term
  - Graduate students with GSI/GSRA appointments = 6+ credits per term
- Students are expected to be **physically present on-campus**.
  - **Only 3 online credits** may be counted towards the full-time enrollment requirement. The remaining courses must be in-person or hybrid to protect your immigration status.
- Maintain **valid passport** and **I-20 or DS-2019**
- Maintain health insurance coverage (automatic enrollment/coverage begins with start date of I-20/DS-2019)
  - Students with an assistantship or fellowship that includes GradCare for health insurance should reach out to the [U-M Benefits Office](#) or their department for support.



# 1. Immigration Check-In and Maintaining Status



## Employment in the USA

### On-campus:

- May work [on-campus](#) up to 20 hours each week during academic year.
  - On-campus work authorization for F-1 students is automatic.
  - J-1 students must apply in advance through the International Center.
- May work more than 20 hours each week during breaks/vacation period.

### Off-campus:

- May not work off campus without proper work authorization such as [Curricular Practical Training \(CPT\)](#) for F-1 students or [Academic Training](#) for J-1 students.
  - All off-campus employment activities must be directly related to the major field of study
  - F-1 degree seeking students must be enrolled for one academic year (i.e. two full terms) before they are eligible for CPT, unless academic program requires immediate participation for all students in the program.

# 1. Immigration Check-In and Maintaining Status



## Immigration Advising Services:

- **Virtual Drop-In Advising (Zoom-based)**
  - Advising for students who have quick questions
  - Two hours every weekday
  - Recommended first step for speaking to an advisor
- **Virtual Appointments**
  - For students who have many questions or complicated situations
  - Offered at various times during business hours
  - Typically scheduled *after* attending Virtual Drop-in Advising
- **Email: [icenter@umich.edu](mailto:icenter@umich.edu)**
  - Any questions
  - Emails are distributed among our advisors and answered in a timely manner

[More Information](#)



*Photo: International Center Staff (December 2023)*

## 2. Getting Around Ann Arbor & Shopping



### U-M Blue Buses

- Free
- Map available on [MBus Tracker app](#)
- Connects Central, North, Medical, and South campuses

### The Ride (Ann Arbor public bus system)

- Free when using M-Card (student ID card)
- Operates public transportation services in the greater Ann Arbor-Ypsilanti area

### Cycling

- Protected bike lanes and trails available throughout campus

### Spin Scooters & Electric Bikes

- Spin scooters are available around downtown area and campus, for a fee

Rideshare: [Lyft](#) & [Uber](#)

Hourly Car Rental: [ZipCar](#)

## 2. Getting Around Ann Arbor & Shopping



### International Grocery Stores (a few examples!):

- Bombay Grocers: 3010 Packard St
- Hua Xing Asia Market: 2867 Washtenaw Ave, Ypsilanti
- [Patel Bros](#): 3426 Washtenaw Ave
- [Om Market](#): 2713 Plymouth Rd
- Way 1 Supermarket: 2789 Plymouth Road
- Kasoa African Market: 3925 Jackson Road
- Galleria Asian Market, 3111 Packard Street
- Aladdin's Market, 3188 Packard Street
- Tienda La Libertad, 2231 Liberty Street
- Euro Market, 3108 Packard Street
- Among others!

### Downtown Shopping (Central Campus):

- Pharmacy: [Walgreens](#) and [CVS](#)
- [Target](#) (groceries, personal care, household supplies, etc.)
- Groceries:
  - [Ann Arbor Farmers Market](#)
  - [Argus Farm Stop](#)
  - [People's Food Co-op](#)
- [Maize & Blue Cupboard](#) (appointment needed)
  - Groceries and personal supplies available at no cost for students who have physical or financial barriers to access a regular grocery store.

### Online Shopping:

- Amazon (student membership available)
- [Weee!](#): Asian groceries
- Most major retailers, including local grocery delivery

# 3. Paying Your Bills and Banking



**Fall 2025 Due Date:**  
**August 31, 2025**

## Setting Up a US Bank Account

- The selection of bank is your personal choice.
  - Regional banks, credit unions, national banks, and international banks
  - Find banks that have ATM machines close to where you live
  - Set-up online & mobile banking
- It is okay to switch banks
- [Click here](#) for more info and a local bank comparison

## Parents and Family Authorization

Students may authorize up to four other individuals access to their student account information (eBill, 1098T form, etc.) electronically as well as authorize the University of Michigan to discuss this information via phone, email, or in-person.

## U-M Payment Plan

Enrollment period April 15 - June 30. Final deadline: September 1. Enroll early to get the most benefit! \$30 fee/semester to participate.

[How it works](#)[Help](#)[Login](#)[English](#)

Flywire is the trusted choice of  
**millions of students and  
thousands of institutions  
worldwide**



University of Michigan - Ann Arbor

University of Michigan - Flint

University of Michigan - Flint Application Fees

University of Michigan - Ross Executive Education Program

Start typing the institution's name

[Continue](#)

or

[I can't find who I want to pay](#)

## How to Pay Tuition with Flywire

1. Find your institution
  2. Enter your payment amount
  3. Select payment method
  4. Enter the payer's information
  5. Enter the student's information
  6. Review and submit!
- Track your payment via SMS text or online through your account.
  - Can also be used to process refunds from U-M.
  - 24/7 multilingual customer service via phone, WeChat, live chat, and email.
  - [More information](#)

Learn more about [using Flywire](#) and [region-specific tips](#)!

# 4. Discover Student Orgs and Get Involved

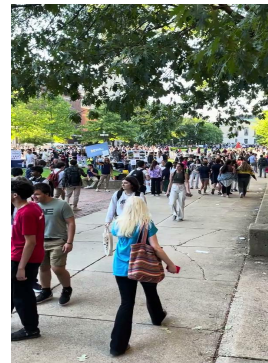


## Maize Pages

- [Find any student organization](#)
  - Search by type of organization
  - Search by name
- Track your involvement in clubs

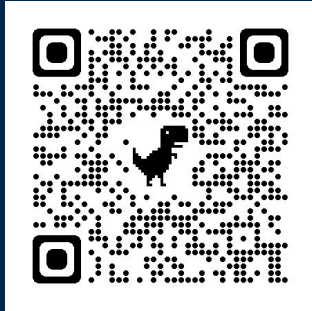
## Student Organization Fairs: Festifall

- **Festifall-North Campus**
  - Monday, August 25, 2025
  - 5 PM - 8 PM
  - Location: Gerstacker Grove
- **Festifall-Central Campus**
  - Wednesday, August 27, 2025
  - 2:30 PM, 4:30 PM, and 7:00 PM
  - Different organizations at each time slot
  - Location: Diag and Ingalls Mall





# 5. Attend Other Orientation Events



[Scan to reach the IC  
Orientation Page!](#)

## IC Orientation Overview

- **Peer-To-Peer Workshops: (July 21 - August 1 - VIRTUAL)**
  - Led by Summer Orientation Peer Advisors on academic, social, cultural, and living resources.
- **IC Welcome Desk:** A great place to drop-in and ask Peer Advisors questions about U-M and Ann Arbor
- In-Person **Social Events** in August!
- **International Student and Family Welcome Day** (Monday, August 18)
  - *Invite will be sent out soon, but registration is now open!*

## **ONSP Orientation Overview** (undergraduate students)

Orientation for first-year and transfer undergraduate international students is hybrid and involves both virtual and in-person components for all students. International students will be scheduled for their in-person orientation program Aug 20-22 (August 19 for transfer students). All steps of orientation are required for new students.

## Graduate Program Orientation Details

- This varies by school/college/department. You will receive more information about this from your academic unit directly.

# Wellness Resources for Students - University

## Division of Public Safety and Security (DPSS)

- [U-M Emergency Alert](#): Emergency text/email alerts (bad weather, power outages, school closings, safety concerns)
- Save this phone number: (734)763-1131
- [Blue Light Phones](#)
- DPSS Mobile App to easily access services ([Apple & Android](#))
- **In an emergency: DIAL 911 (physical health or safety) or 988 (Suicide)**

Late Night Transportation including SafeRide

## University Health Services (UHS)

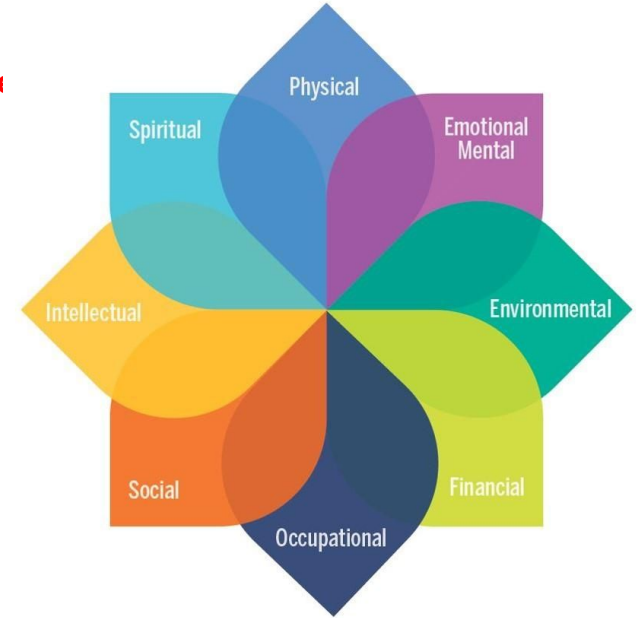
- Appointments and 24-hour Nurse Advice Line are available
- Most services are free or have low fees
- Can request interpretation when scheduling

## Counseling and Psychological Services (CAPS)

- Free counseling services; counselors speak a variety of languages
- Offers events and group support
- Virtual mental health tools: [Togetherall](#)

## Psychiatric Emergency Services (PES)

- Provides emergency/urgent walk-in evaluation and crisis phone services available 24/7
- Supports students who are in immediate danger because of thoughts of suicide



# Wellness Resources for Students - University

## Dean of Students Office

- Assists students who are experiencing anything that may be interrupting their campus life.
- Students can walk-in, call, or email and receive support during normal business hours (typically 8 am - 5 pm on Mondays - Fridays).

## Wolverine Wellness

- Promotes holistic well-being
- Offers [wellness coaching](#)
- Offers [wellness course](#): ALA 240: Living Well in College & Beyond for Student Leaders (2 credits)

## Services for Students with Disabilities (SSD)

- Help get accommodations for students with disabilities.

## Sexual Assault Prevention and Awareness Center (SAPAC)

- Provides a wide array of supportive services for survivors of sexual assault, intimate partner violence, stalking, sexual harassment, and gender-based Harassment

## Recreational Sports

- There are gym facilities, group fitness classes, and personal training, intramural and club sports available. North Campus Recreation Building (NCRB) and Intramural Sports Building (ISB) remain open for 2024-25 academic year. Central Campus Recreation Building (CCRB) is currently being rebuilt (Will reopen in Fall 2025) and a temporary facility is available.



# Wellness Resources for Students - International Center

## Immigration Advising

- Offers advising for any immigration-related issues
- Virtual drop-in hours every week day

## Health Insurance Advising

- Offers advising and supports on health insurance questions
- Virtual drop-in hours offered on Mondays and Thursdays

## International Student Advocate

- Supports international students to navigate campus life
- Appointments available via email

## International Center Events

- Monthly events such as International Coffee Hour, Lunch Conversations, Birthday Celebration, and more.
- There's always free food!

## International Center Emergency Fund

- Provides financial support for unusual and unforeseen emergency expenses
- Applications are reviewed two times a month

## Arrival & Settling in and Life in Ann Arbor Webpages

- Curated collection of resources available on the IC website



# Wellness Resources for Students - Scam Alert!!

- International students are targets, and sometimes victims, of phone and email scams.
- Criminals could call and/or email students pretending to be from their home country consulate (or embassy), from U.S. law enforcement agencies, or University officials.
- If you receive a call, text, or email that may be scam and are not sure what to do, seek advice **BEFORE sending money** and before giving out personal information.
- **VERY IMPORTANT:**
  - Please [visit this webpage](#) to learn more about common scams impacting U-M international students, as well as how to respond if you think you are asked.



# Guide for Family Members

## Resources for Parents & Family Members of U-M International Students

These guides are designed to provide family members a broad overview of key resources and pertinent information related to their student's experience on campus.



### **Orientation Guide for Family Members of U-M International Students**

This guide is designed to provide family members of University of Michigan (U-M) international students a broad overview of key resources and pertinent information related to their student's experience on campus. This overview is not exhaustive. Please visit the [U-M International Center](#) website for more information

**Academic Support** – U-M offers numerous offices and services to assist students in their academic pursuits. However, students are expected to take charge of their education. If your student is having trouble academically, they must take the initiative by seeking out the resources available to help.

- **Academic Advising:** Advisors are provided by the School or College in which your student is enrolled. Students spend time one-on-one with their academic advisor to discuss individual interests and course selections. Advisors can also help students set academic goals and refer students to campus and community resources.
- **Academic Support Services:** A variety of services, including writing support and tutoring, are available to U-M students based on their academic program of study and individual needs. [These are some of the primary services for new students.](#)





# U-M International Center Information

**Fall 2024**

 **13,718** Students, Scholars, Employees, & Dependents Supported by the IC

 **146** Countries Represented

 **8,635** International Students Enrolled at U-M

## Location:

1500 Student Activities Building (SAB)  
515 E. Jefferson Street, Ann Arbor, MI 48109

## Contact:

+1(734)764-9310

[icenter@umich.edu](mailto:icenter@umich.edu)

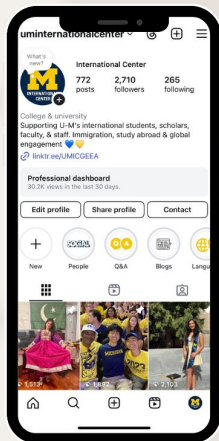




# International Center Communications


**FOLLOW US ON INSTAGRAM!**


@uminternationalcenter



**Learn About:**

 **Upcoming Events & Workshops**

 **Advice from Current International Students**

 **Photos & Stories from Programs**

 **Collaborations with other U-M Offices**



STUDENT LIFE  
**INTERNATIONAL CENTER**  
UNIVERSITY OF MICHIGAN

- **Social Media**
  - Instagram
  - Facebook
- **Orientation Program Announcements (summer)**
- **Weekly Newsletter (Fall/Winter)**

# Q&A

- 01** Maintaining Immigration Status
- 02** Getting Around Ann Arbor & Shopping
- 03** Paying Your Bills & Banking
- 04** Student Orgs and Getting Involved
- 05** International Center & Other Orientations





# Thank You!